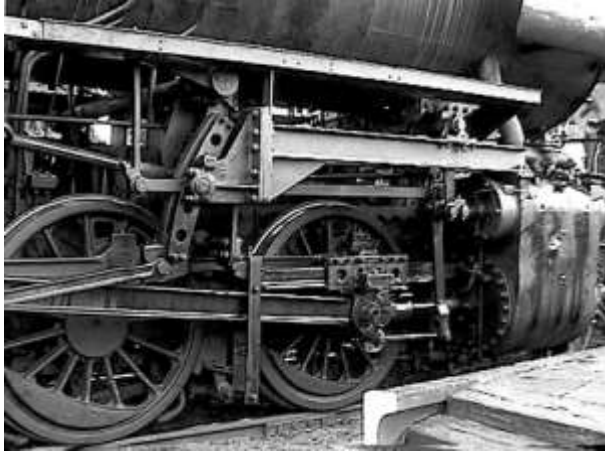
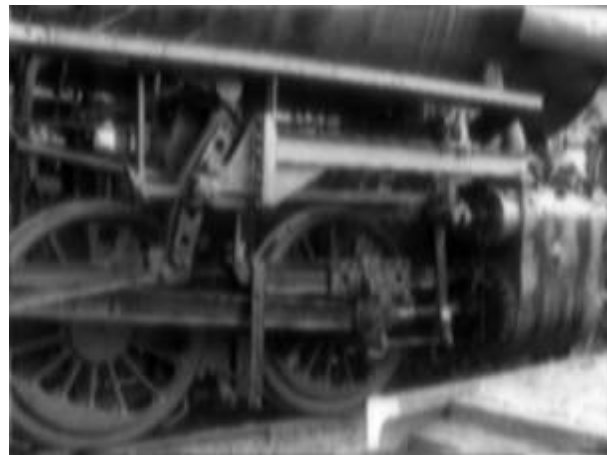
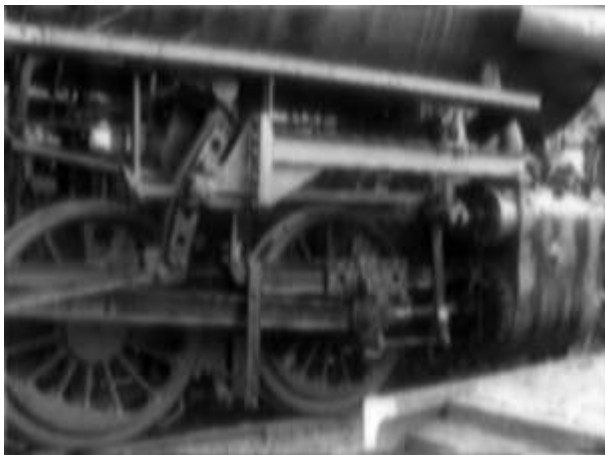


<http://www.svi.nl/ConvolvingTrains>

Original image (below) is treated as a X-Z (vertical) slice of a 3-D image:



Using the Confocal Microscope PSF the image is blurred, but you can still recognize it:



Using the Wide Field Microscope PSF you can no longer identify the original object:



Deconvolution of confocal image (above)



Apply deconvolution to the above blurry widefield images (right) to obtain a partial improvement

Both images are very much improved, but due to the missing cone of frequencies in the widefield case, horizontal structures (in 3D, horizontal planes, like flat membranes) cannot be fully recovered.